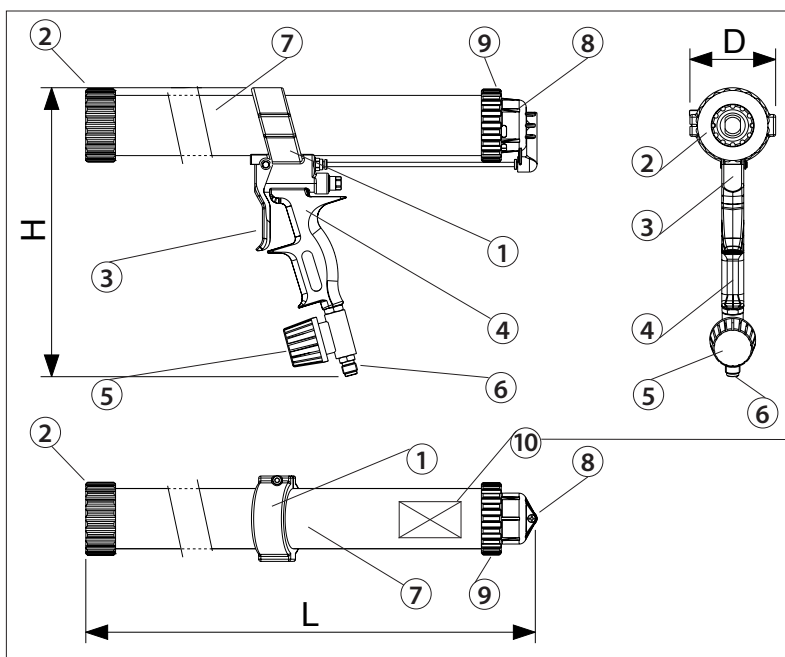


INSTRUCTIONS FOR USE OF CSG SERIES MODELS: 210 - 245 - 270 - 370 - 400 - 450 - 660 - 1100



1. PRODUCT IDENTIFICATION

- 1- Body of the gun
- 2- Front ring nut
- 3- Control lever
- 4- Handgrip
- 5- Pressure regulator
- 6- 1/4 male gas supply
- 7- Material holder tube
- 8- Quick outlet valve
- 9- Back ring nut
- 10- EC mark

PNEUMATIC APPLICATOR GUN
 mod. - xxx/xxx xx - cod. xxxxxxx
 P.M.T. srl - Antegnate (BG) ITALY

mm-yyyy

MAX PRESSURE 10 bar (145 psi)

(*) The various models differ from the length of the tube and the type of extruded product.

1.1 Sizes

Model	Cartridge	Soft-pack	Cartridge (ml)	Soft-pack (ml)	L	H	D
CSG 210	●	-	≤310 ml	-	260 mm	263 mm	78 mm
CSG 245	●	●	≤310 ml	≤400 ml	307 mm	263 mm	78 mm
CSG 270	-	●	-	≤400 ml	307 mm	263 mm	78 mm
CSG 370	●	●	≤310 ml	≤600 ml	410 mm	263 mm	78 mm
CSG 400	-	●	-	≤600 ml	440 mm	263 mm	78 mm
CSG 450	●	●	≤310 ml	≤400 ml	556 mm	263 mm	78 mm
CSG 660	-	●	-	700 ml	665 mm	263 mm	78 mm
CSG 1100	-	●	-	1800 ml	1150 mm	263 mm	78 mm

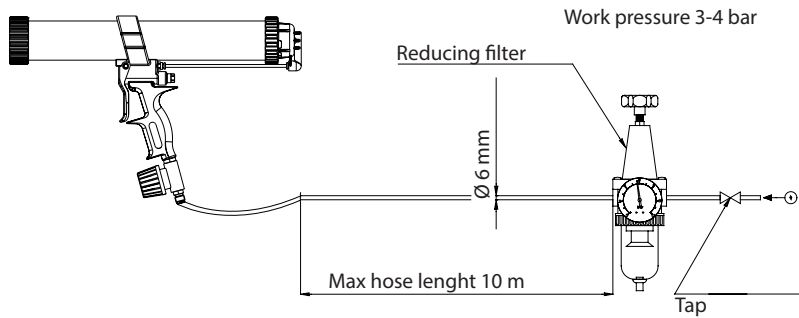
2. WARNING

- This symbol focuses your attention on the points concerning your safety. Read carefully and observe the instructions included.*
- Before the use of the gun, read and observe the instructions carefully.*
- Before any repair, maintenance and replacing operations, disconnect the gun from the air supply.*
- Before any repair or maintenance operations, consult the retailer of the gun or the specialised staff, because wrong operations void the warranty.*
- When choosing and before the use of the product to be extruded with the gun, check on the product safety sheet the compatibility with the working environment and with the individual protective equipment used.*
- Never point the gun to yourself, other people, animals or things that are different from the object to treat.*
- During the use, wear protective equipment (gloves, goggles, masks, overalls etc.), according to the instructions indicated on product safety sheet. We recommend, however, to always use protective goggles.*

3. PACKING AND STORAGE

The gun is supplied in a single WHITE KEB CARTON ST/B343, low wave thickness 2.8-3 mm; the gun is contained in a polyethylene bag.

4. STARTUP






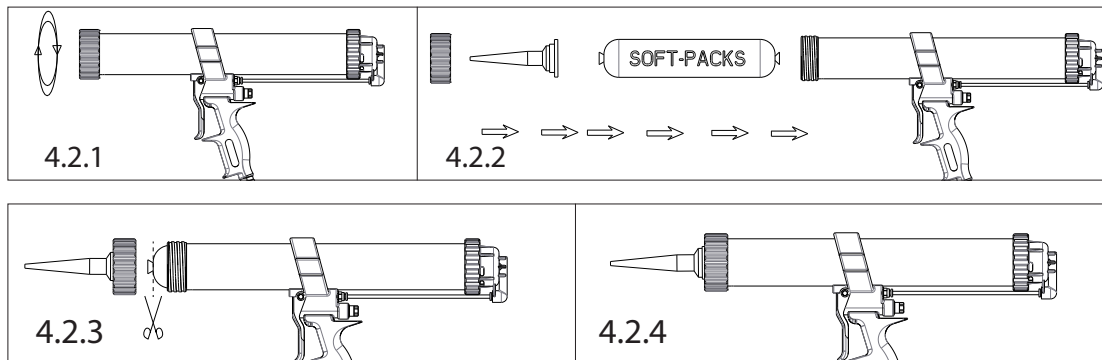
4.1 Air supply system

The gun has to be connected to a compressed air system, having specific features. The gun has a 1/4 gas nipple, to which you can connect according to your specific needs. The air consumption is reduced and proportional to the number of the times the dispensing lever is released.

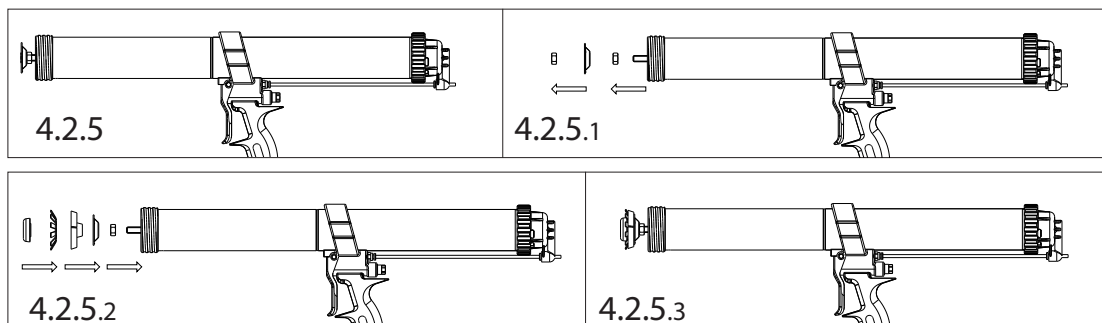
4.2 Soft-pack replacing (Mod. 245 - 270 - 370 - 400 - 450* - 660 - 1100)

(*) This models have a converting soft-packs kit.

-  Remove the gun from the air supply during the replacement of the soft-pack and any time the ring nut is not tightened to the tube. An incidental pressure on the lever may cause an accidental expulsion of the pack and this may be dangerous for the worker and the surrounding people.
-  Always check the expiration date of the material.
-  Never insert in the gun damaged packs or cartridges.







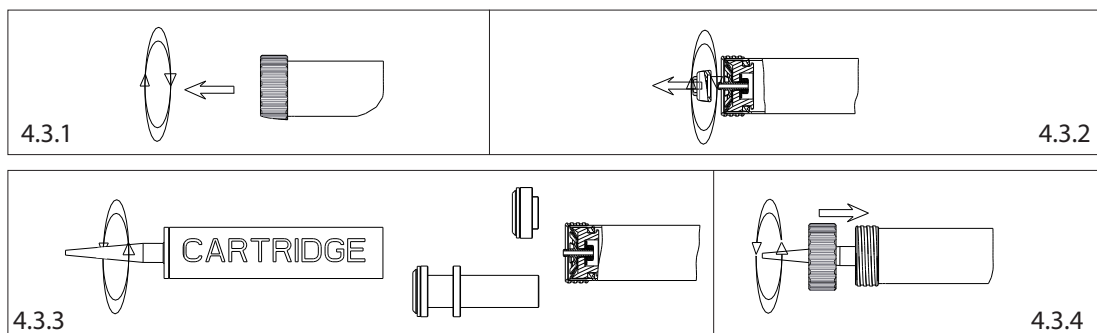
- 4.2.1** Unscrew counterclockwise the front ring nut (2) and take it off the gun.
- 4.2.2** Insert and clasp the pack nozzle to the front ring nut (2) (pushing the piston back if it is forward); then insert the pack in the holder tube (7) until the end, so that only the side to cut sticks out.
- 4.2.3** Cut the pack right after the metallic closing band.
- 4.2.4** screw clockwise the front ring nut (2) with the nozzle assembled on the material holder tube (7).
- 4.2.5** (Only for CSG 450 model) Before inserting the soft-pack in the material holder tube, verify that the soft-pack extrusion kit is assembled as represented in the picture:
 - 4.2.5.1** Unscrew the fixing bolts and remove the metallic cartridge presser (standard)
 - 4.2.5.2** Screw the fixing bolt, the cartridge presser, the plastic support (blue), scraper, plastic soft-pack presser (blue)
 - 4.2.5.3** Make sure to have fastened all the components in order to have the best extrusion.



4.3 Cartridge replacing (Mod 210 - 245* - 370* - 450)

(*) This models have a converting cartridge kit.

-  Remove the gun from the air supply during the replacement of the cartridge and any time the ring nut is not tightened to the tube. An incidental pressure on the lever may cause an accidental expulsion of the pack and this may be dangerous for the worker and the surrounding people.
-  Always check the expiration date of the material.
-  Never insert in the gun damaged packs or cartridges.
-  Press the control lever before unscrewing the front ring nut to move the piston forward.



4.3.1 Unscrew counterclockwise the front ring nut (2) and take it off the gun.

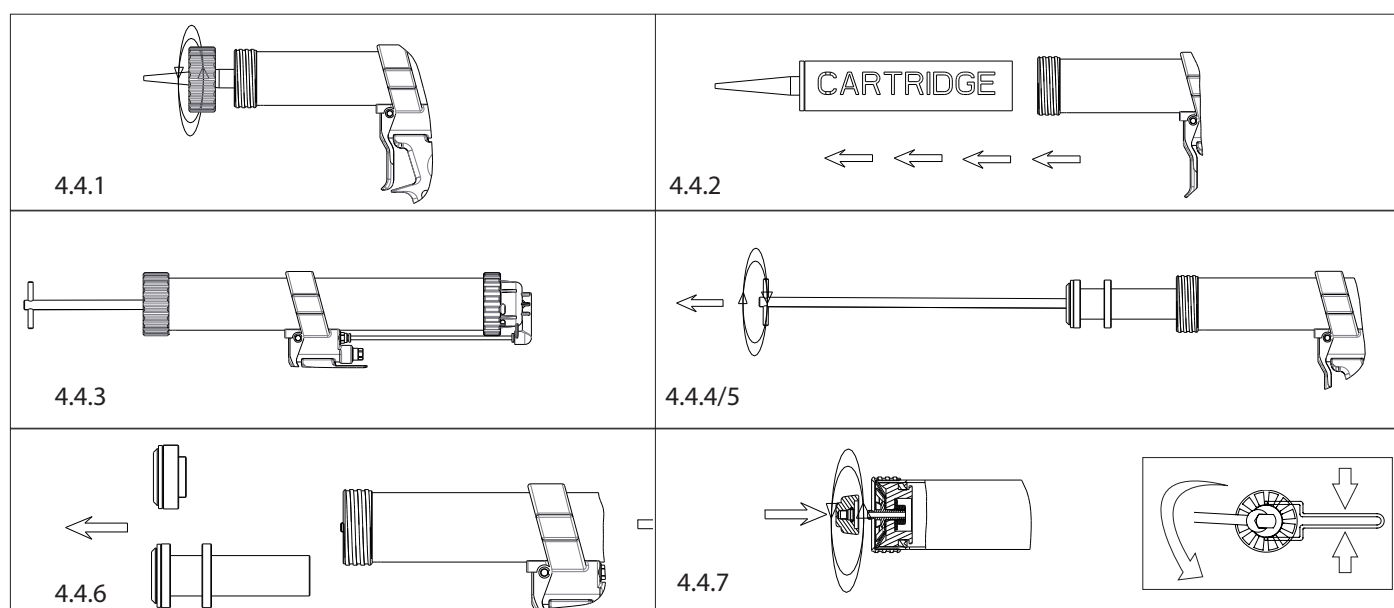
4.3.2 Unscrew counterclockwise the press bag cone and take it off the piston, with the proper wrench

4.3.3 Screw clockwise the plastic nozzle on the gun, then insert the piston on the cartridge adapter, paying attention that the gasket is directed to the front side of the gun and finally insert the cartridge, pushing the piston with the cartridge as back as possible.

4.3.4 Insert the front ring nut (2) and screw it clockwise

4.3.5 The CSG 210 and CSG 450 are already provided with a presser suitable for the extrusion of cartridges

4.4 Reset of bag predisposition (Mod 245 - 370)



4.4.1 Disconnect the gun from the air supply, unscrew the front ring nut (2) and take it off the gun.

4.4.2 Remove the cartridge from the material holder tube (7)

4.4.3 Insert the threaded rod for piston return and screw it clockwise to the piston.

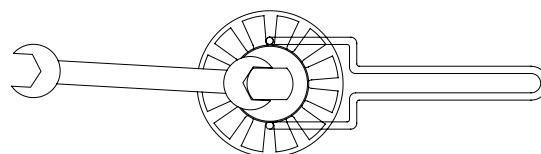
4.4.4 Push the rod and the piston forward until the end.

4.4.5 Unscrew it counterclockwise and take it off.

4.4.6 Remove the cartridge adapter

4.4.7 Insert and screw the bag presser cone clockwise with the proper wrench.

IF DURING THE SCREWING OR UNSCREWING OPERATIONS OF THE BAG PRESSER CONE, THE PISTON TURNS VOIDING THE ACTIONS, INSERT A SPANNER TO BLOCK IT.



5. MACHINE DESCRIPTION

5.1 Specific use


5.1.1 Extrusion of chemical products for sealing (silicone, mastics, glues ect.) contained in appropriate aluminium, plastic cartridges or Soft-packs.


5.1.2 Work only in suitable environments for specific products.

5.2 Unauthorized use

5.2.1 No other specific product than the above-listed may be used.

5.2.2 The appropriate above-listed products cannot be used otherwise.

 *Verify on the security instruction of the extrusion products the compatibility with the work equipment, the work environment and the protection devices used by the operator and the material to be treated.*

 *Keep the gun at least 30 cm away from your face when in use; in the lever release phase, the air coming out of the outlet valve may be dangerous for your face (eyes, ears etc.).*

5.2.3 Use bulk materials.

5.2.4 Use the gun without screwing the front ring nut tightly.

6- SOUND LEVEL EMISSION

The acoustic pressure level in the releasing phase of the lever equivalent measured in A scale, measured at a horizontal distance of 50 cm with sealing products is <80 dBA.

7- USE OF THE GUN

7.1 The air will flow on two conditions:

7.1.1-When opening the main air pressure regulator.

7.1.2- When manually operating on the lever.

7.2 When manually operating on the lever.

7.3 Pneumatic connection of air supply (see 4.1).

7.4 When no longer in use, disconnect the gun from the air supply; if the cartridge is not empty, we advise you to close the opening in order not to let the product dry.


8- SETTING

8.1 Extrusion speed and incoming air flow setting.

Screw clockwise the flow regulator ring nut, in order to obtain a gradual closing of the air flow and a lower extrusion speed. Unscrew counter-clockwise the ring nut for a gradual opening of the air passage with consequent higher extrusion speed.

8.2. Gun thrust setting.

The standard use pressure of the gun is from 5 to 8 bar, depending on the density of the material. If the material to be extruded is very dense, or if the material is thicker because of a low working environmental temperature, operate directly on the pressure reducer. Increase the air pressure to obtain a higher thrust force of the gun. It is advisable to install a reducer filter at the bottom of the gun.

 *Never exceed the max. pressure level (max. 10 BAR).*

 *Check on the product instructions the minimum temperature level in which it can be used.*

OTHER RISKS

The product used may be inflammable: smoking or using open flames is forbidden.

10- PROBLEMS SOLVING

PROBLEMS	CAUSES	CORRECTIVE ACTIONS
When pressing the control lever, the gun does not deliver the product.	Lack of supply.	Open the flow regulator and check the air supply on the flow tube.
Slow or irregular product extrusion.	Very dense product.	Increase the air flow with the flow regulator. Increase the air pressure with the pressure reducer.
Reduction of the pressure level and of the extrusion strength of the gun.	Loose front ring nut or damaged cartridge.	Screw the ring nut and check the instruction concerning the replacement of the cartridge.

11- CLEANING AND MAINTENANCE

11.1 Never dip the gun in solvents or acids.

11.2 Never use solvents or acids to clean the gun, but only specific detergents for the product used.

11.3 If the gun is used properly, it should not need special precautions for the maintenance.

12 - WARRANTY

The quality of the supplied products is covered by warranty. Any piece that is found to be defective by our technical department, will be replaced free of charge, provided it is sent intact and unsoiled ex works. The manufacturer disclaims any responsibility for any harm or damage to people or objects, due to the misuse of the products and recommends to always follow carefully the instructions for the use. Guns and spray guns sold disassembled, modified or incomplete (on the purchaser's request) are not covered by warranty, because they have not been tested and approved by our technical department.